



**Politecnico di Milano**  
**DEI**  
**Milan, Italy**

**Java Modelling Tools:**  
**an Open Source Suite for**  
**Queueing Network Modelling and**  
**Workload Analysis**

**Marco Bertoli, Giuliano Casale, Giuseppe Serazzi**

**Speaker: Giuliano Casale**

September 12th, 2006  
Int'l QEST 2006 Conf. – Riverside, CA, US

# Introduction

- n Java/XML open-source suite, released under GNU GPL license on Sourceforge
- n Objectives:
  - n Support for PE scientists and practitioners
  - n Didactic tool
    - n Graphical user interfaces

# The JMT Suite

n Java PE suite composed by six applications:

n JSIM

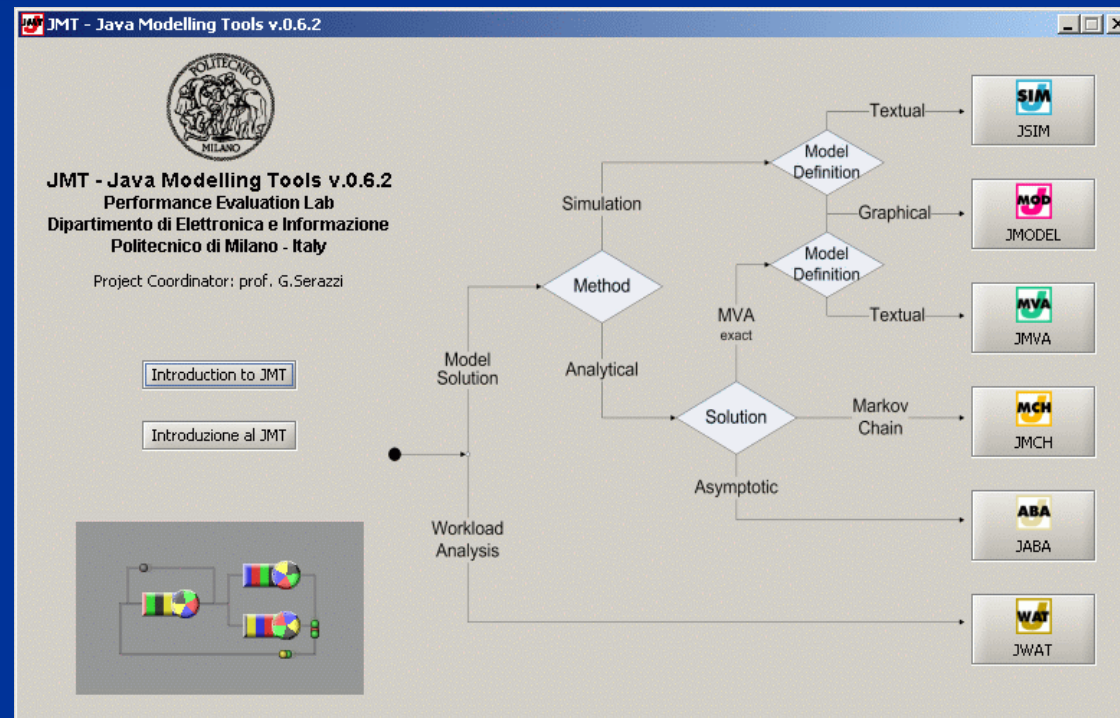
n JMVA

n JMODEL

n JABA

n JMCH

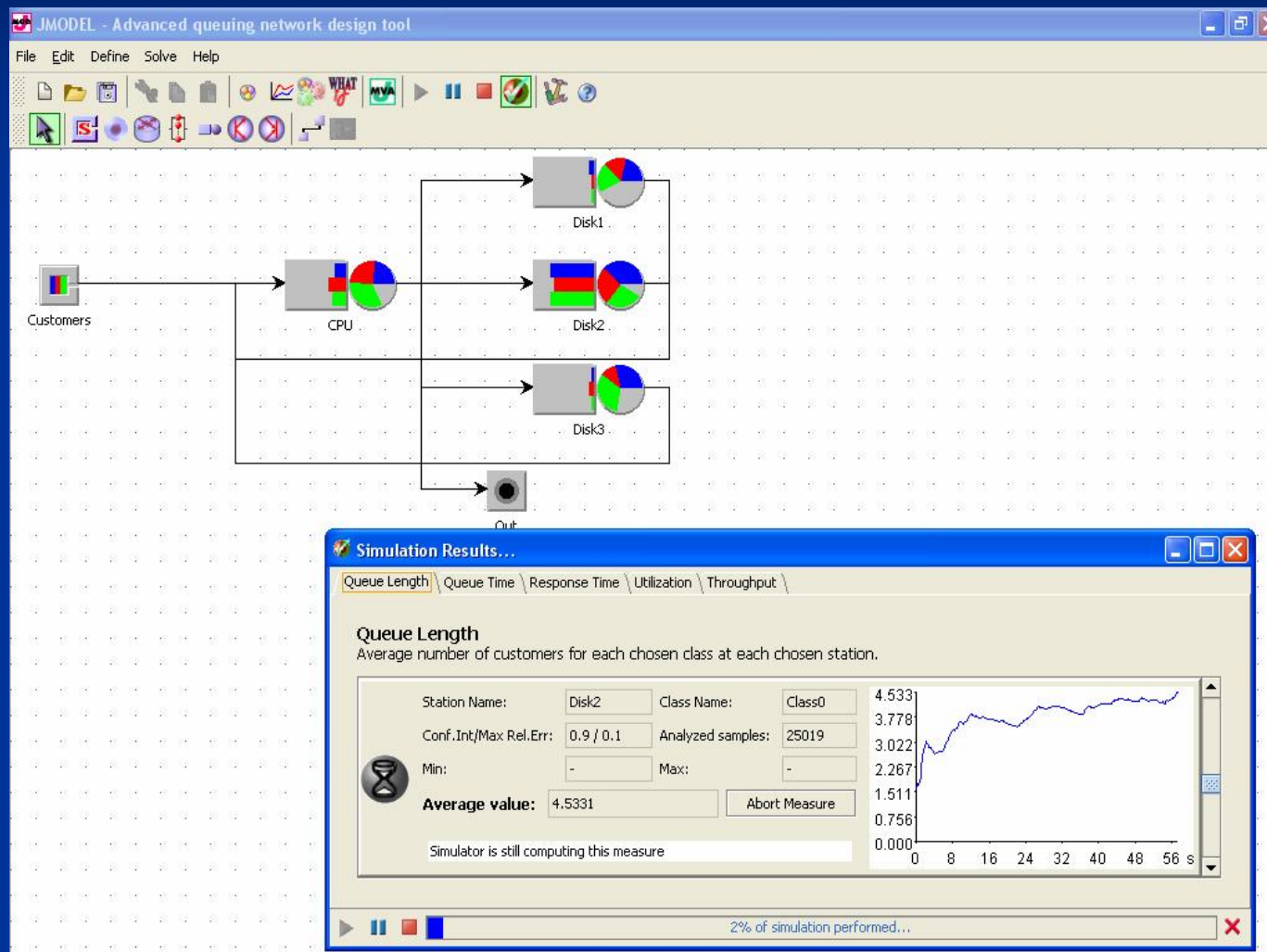
n JWAT



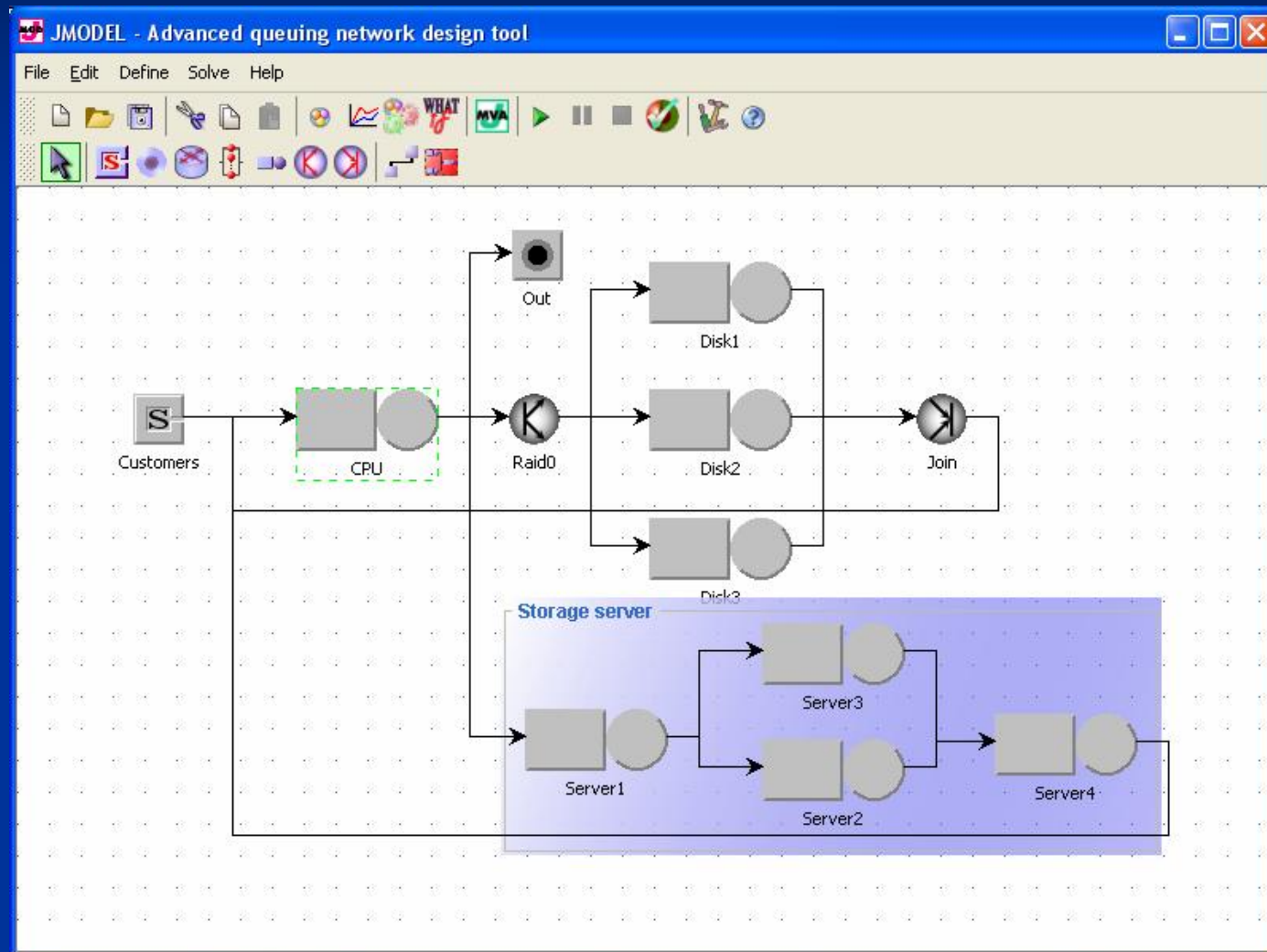
# JSIM Engine + JMODEL GUI

- n Discrete-event simulator for queueing networks
- n Several distributions (Exp, Erlang, Pareto,...)
- n Support for:
  - n Load-dependent behaviors
  - n State-dependent routing
  - n Blocking and finite capacity regions
  - n Fork-join servers
  - n Priority classes

# jSIM/jMODEL

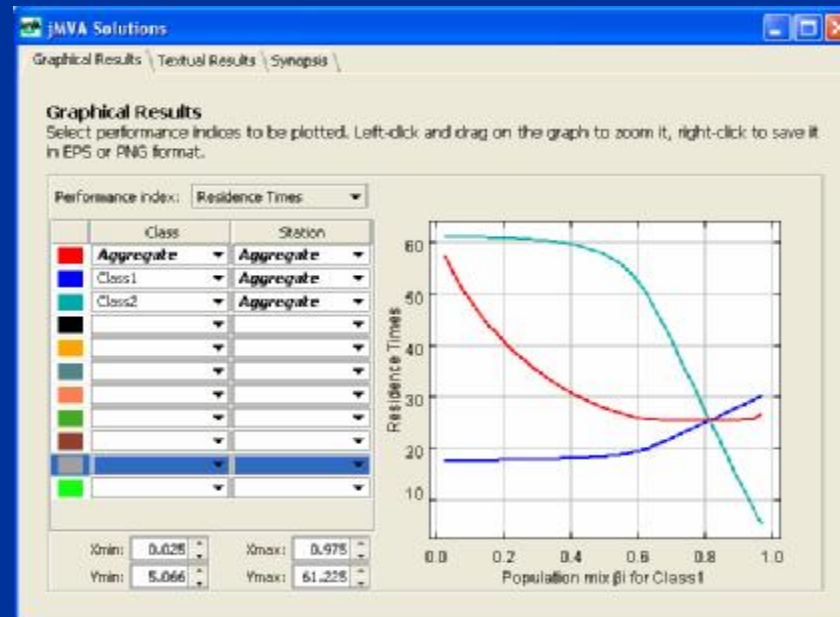


# jSIM/jMODEL (2)

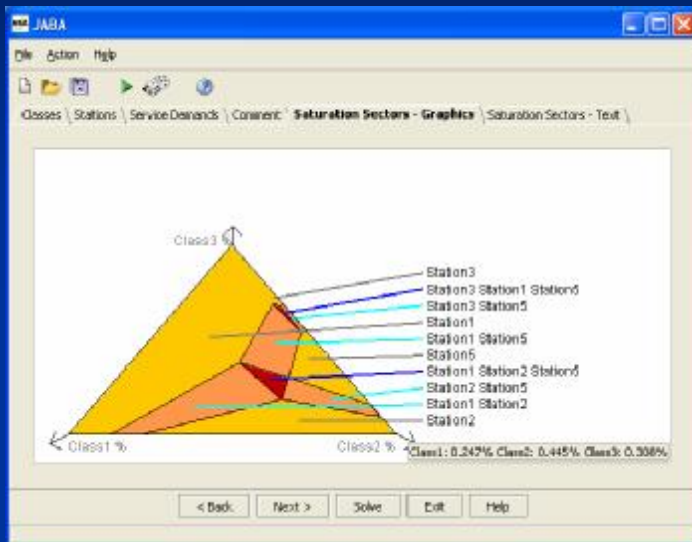


# JMVA

- n Solve open/closed/mixed BCMP queueing nets
  - n Native support for what-if analyses
  - n Integrated with JSIM/JMODEL (reuse models)

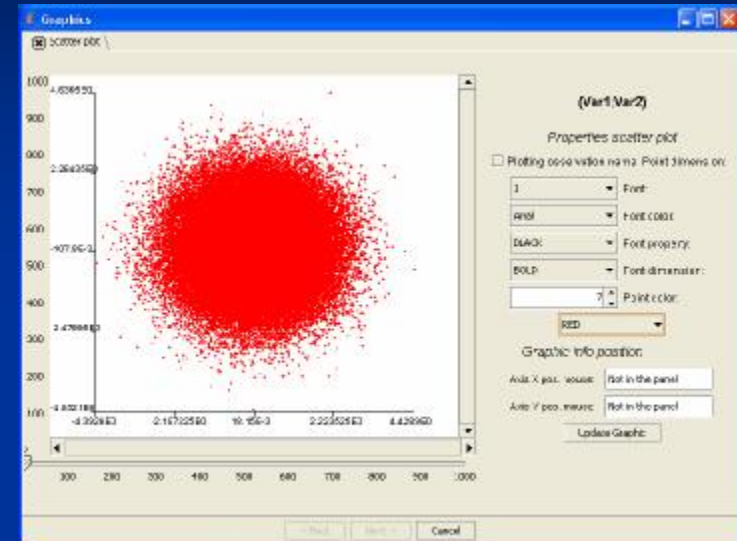


# jABA/jMCH/jWAT

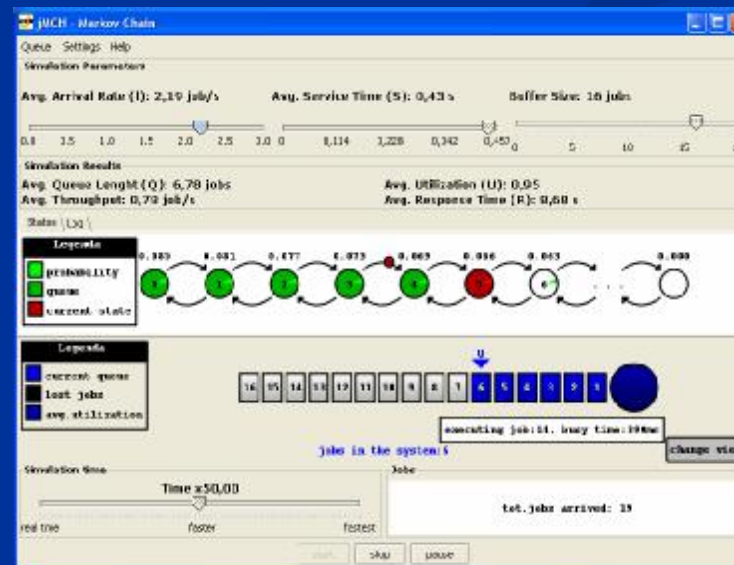


jABA

jMCH



jWAT





n Sourceforge project

<http://jmt.sourceforge.net>

**Thanks!**